

# **SAN JOSE AL FRESCO PARKLETS**

---

SCHEMATIC DESIGN  
NOVEMBER 15, 2022

# TABLE OF CONTENTS

**01**  
Precedents

**06**  
Elevations

**02**  
Main Axo

**07**  
Color Coded Key

**03**  
Road Map

**08**  
EMenu

**04**  
Materials

**09**  
Details and Plan

**05**  
Perspectives

**10**  
Appendix





The wooden planks as a street facing material in conjunction with the plants begin to introduce an organic presence in the city



Above is another example of the post tensioned fabric creating an angular geometry



There is a variety of shading structures that consist of an armature that slips into specific points of the parklet.



The bottom left precedent is an example of the parklet's design integration with the sidewalk.



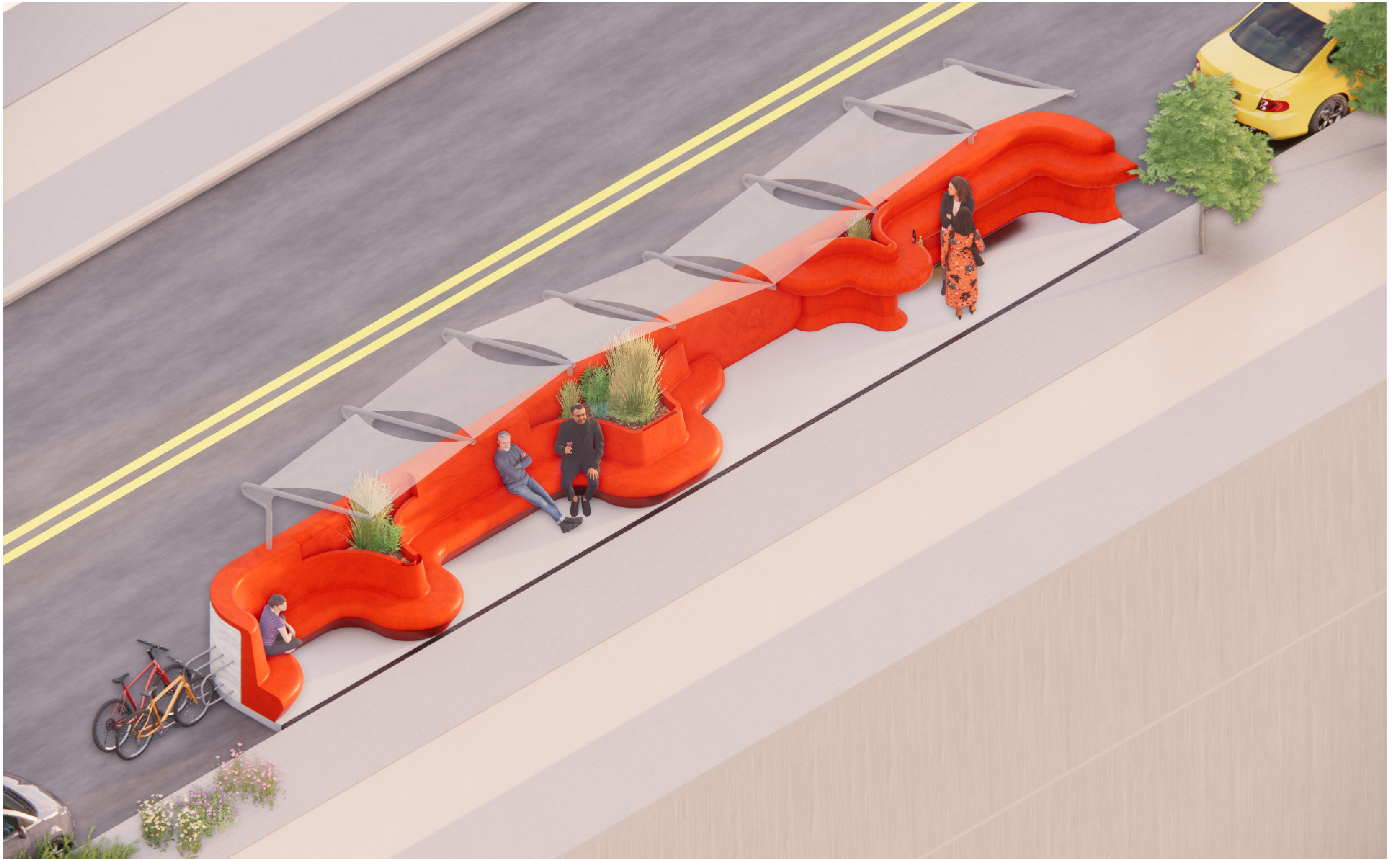
The shade structure can begin to relate to the curvy nature of the design by using tensioned fabric to create curved edges



To maintain an organic material exterior, wooden planks or a wood sheet can wrap around the curvy built-in spaces.

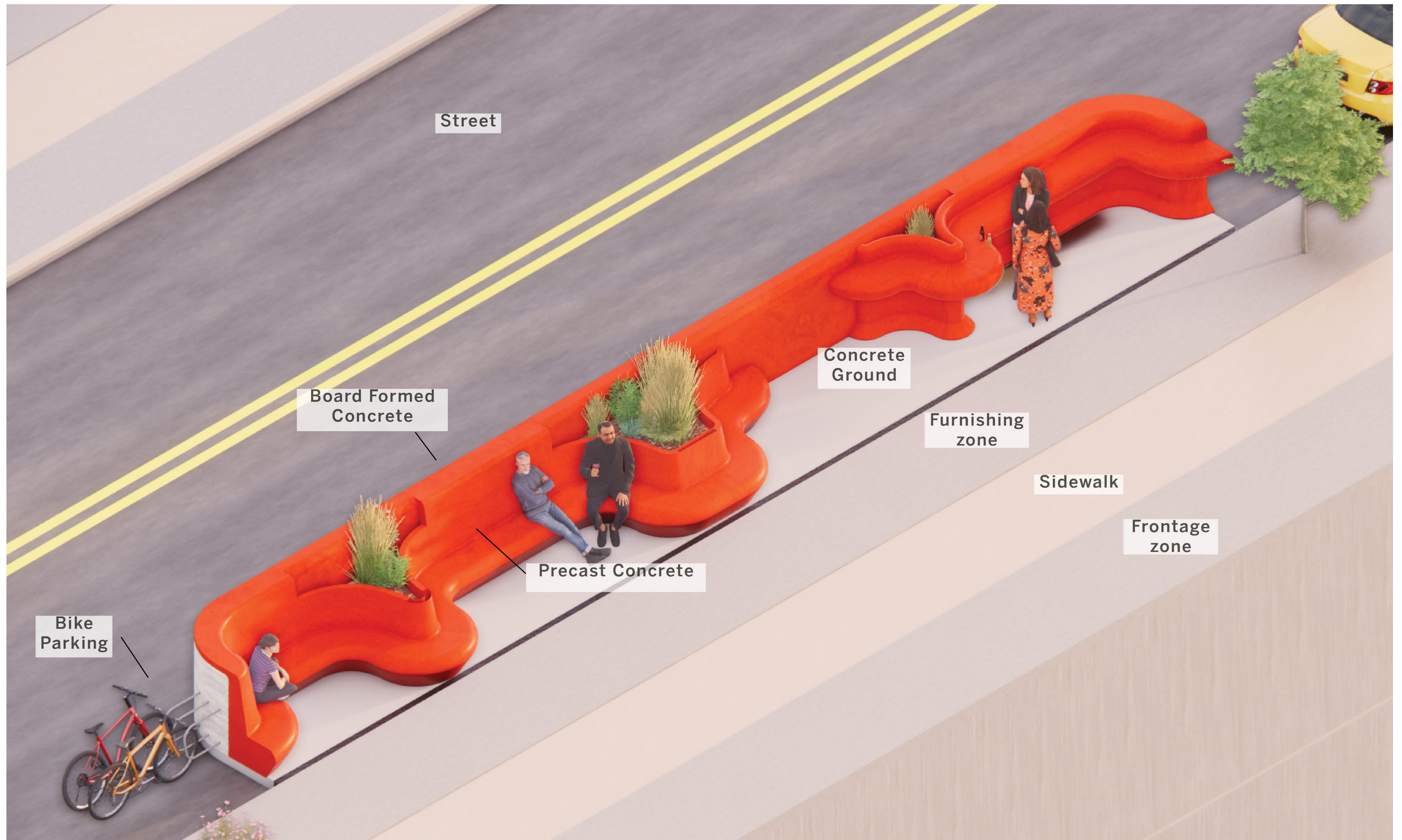
## Precedents





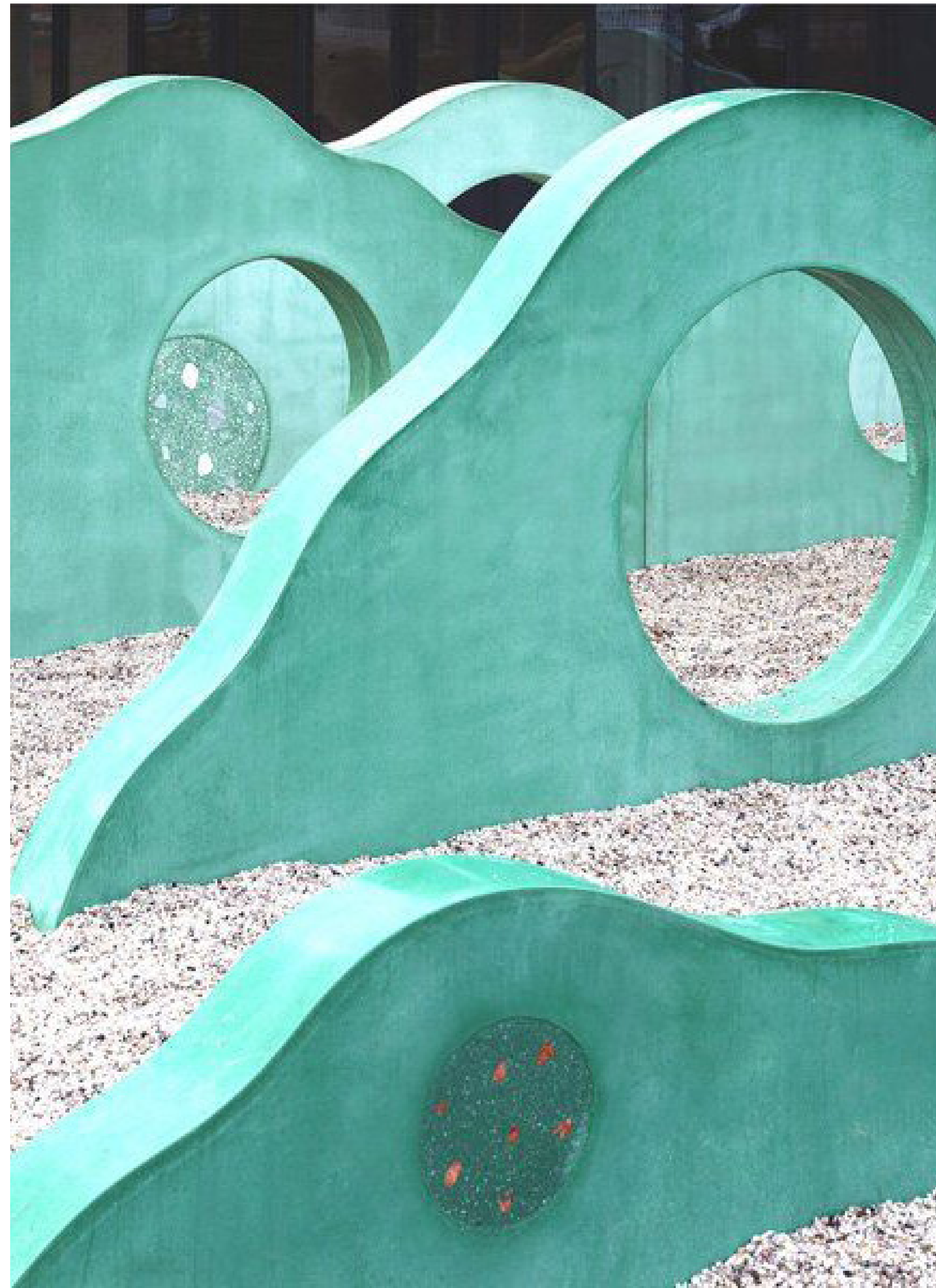
**Main Axometric With Shading Structure**



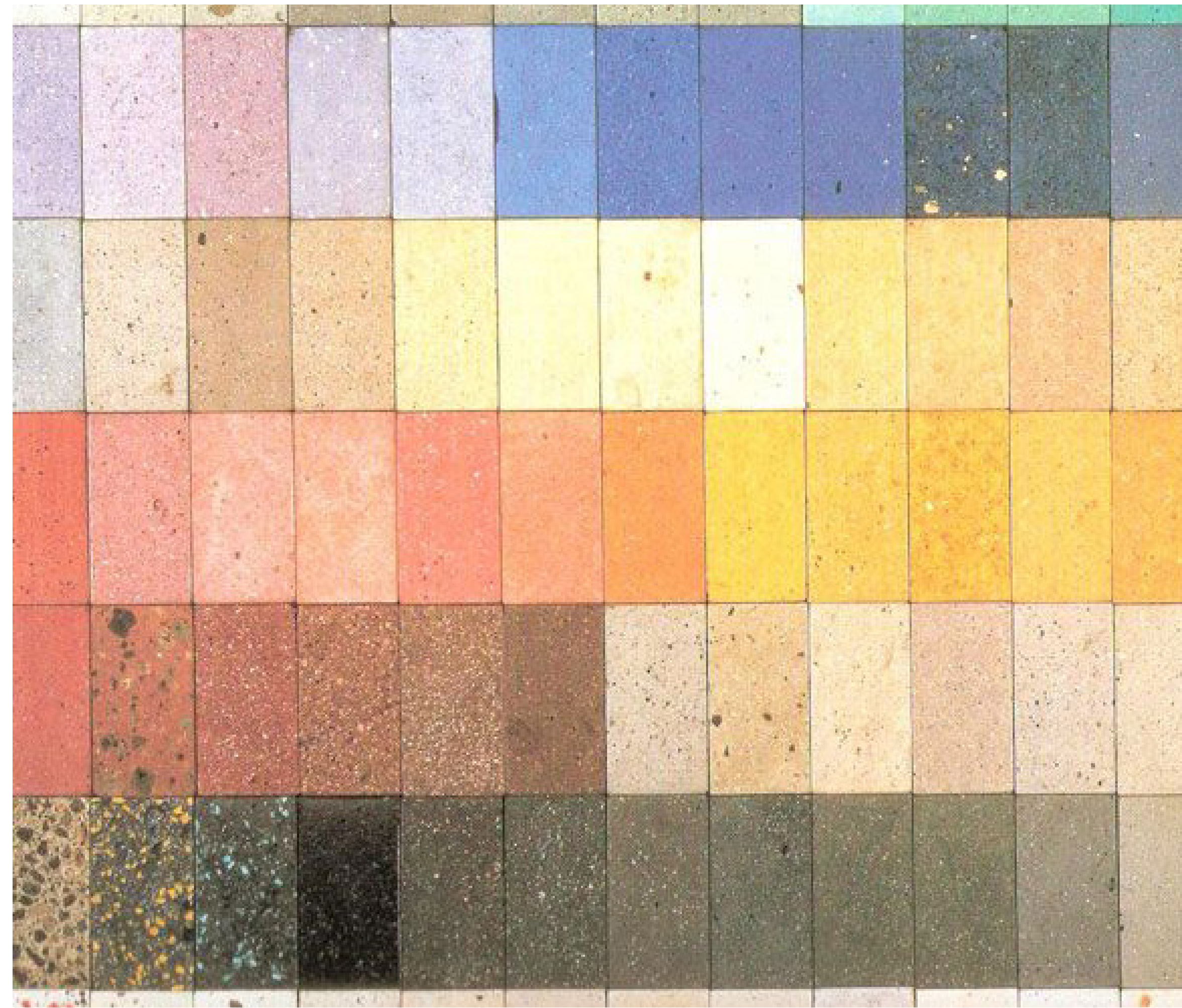


## Road Map





**Integrally Colored Concrete**  
Smooth precast liner that can be a vibrant tone aligning with it's coordinating business



**Board Formed Concrete**  
Creates a neutral shell to the vibrant liner of the parklet contrasting in it's texture and mimics a more organic exterior .



## Materials





Perspective A

Board Formed Concrete



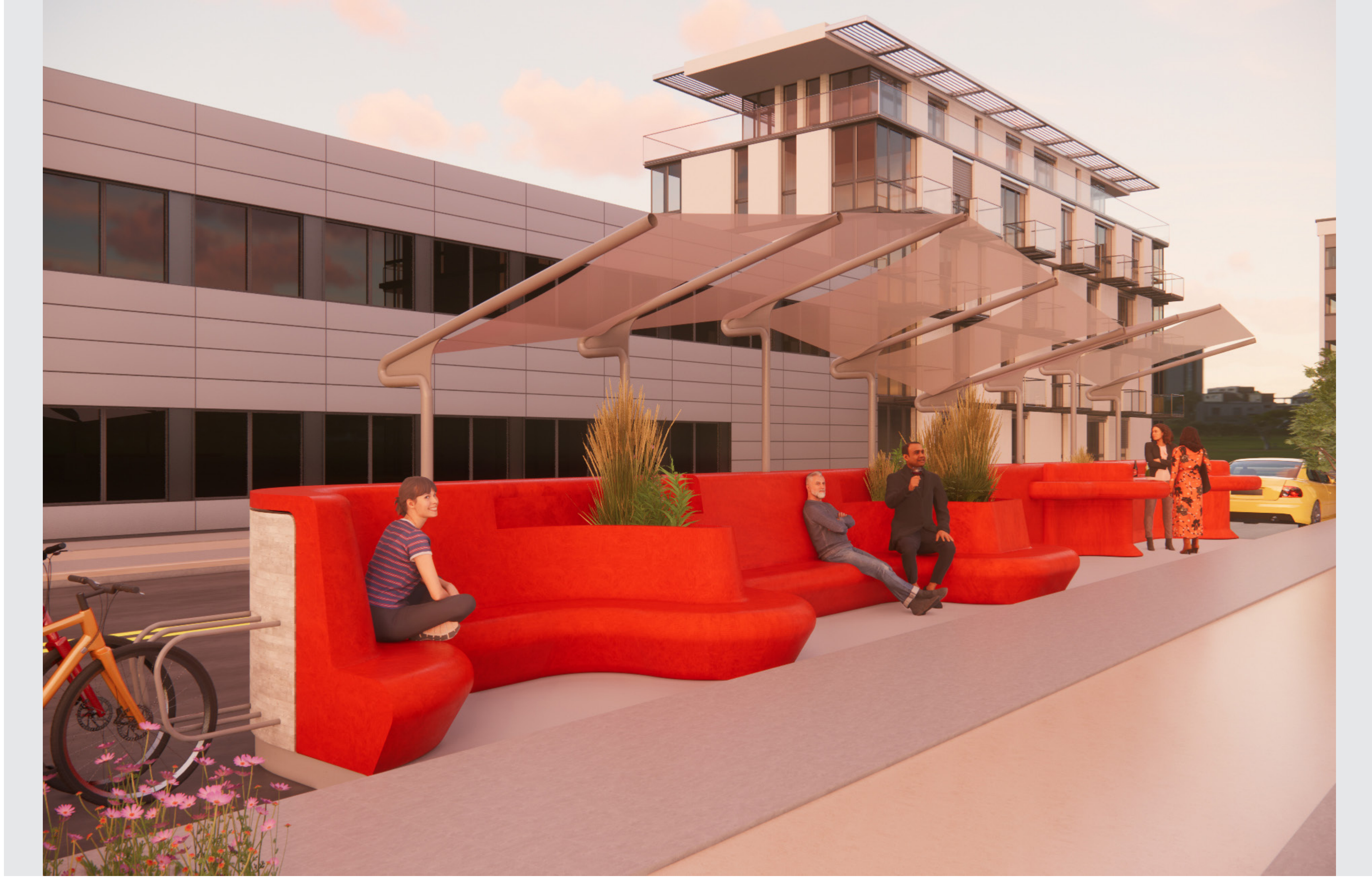
Perspective B

Integrally Colored Concrete



## Perspectives





Perspective C



Perspective D

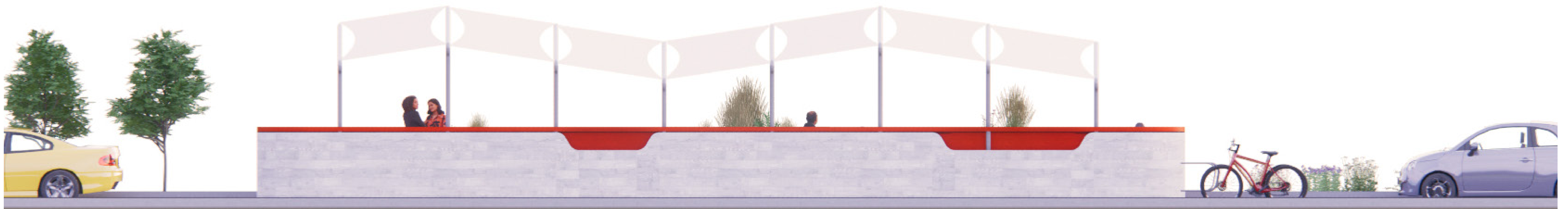
## Perspectives





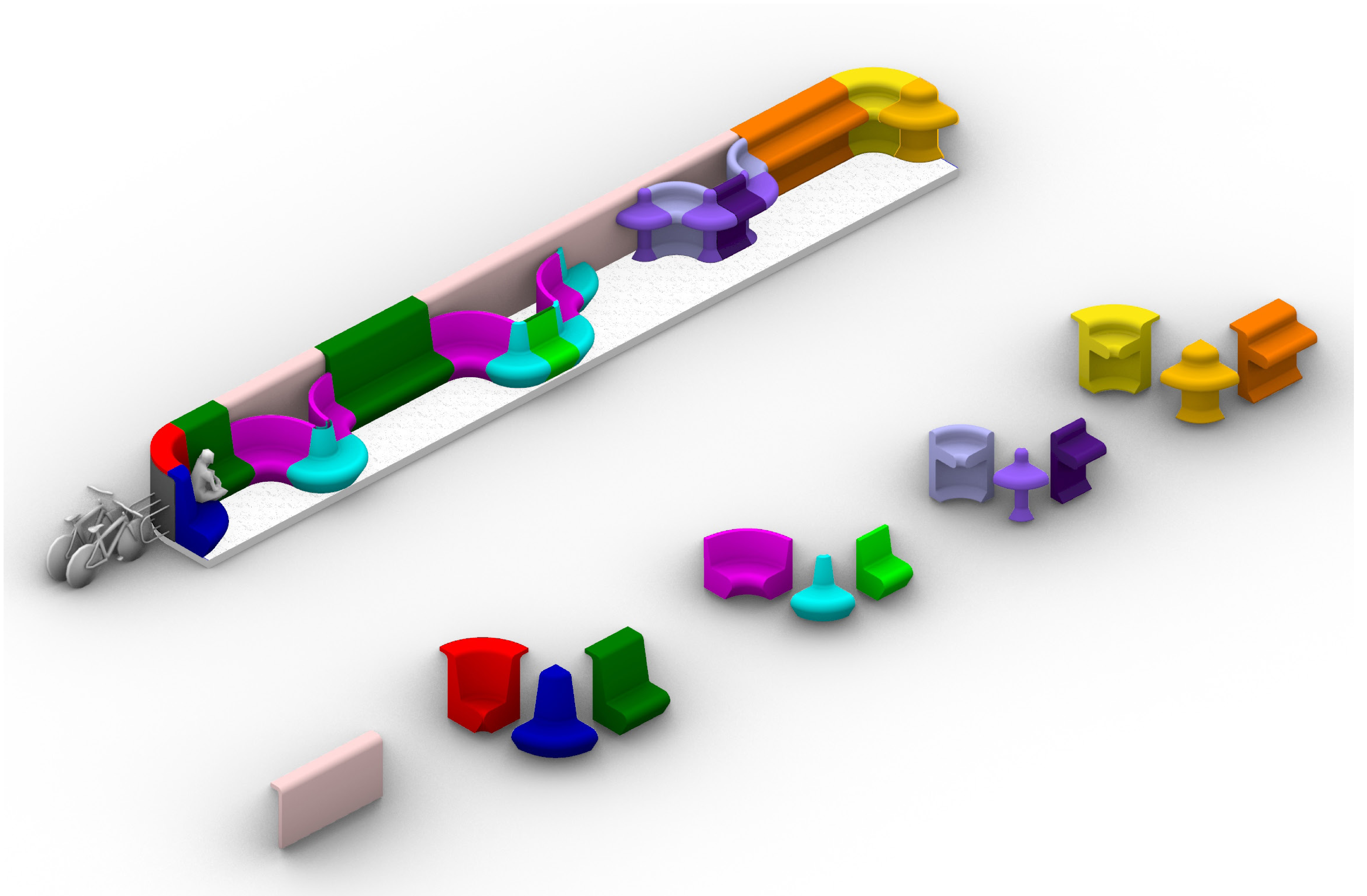
## Elevation From Sidewalk





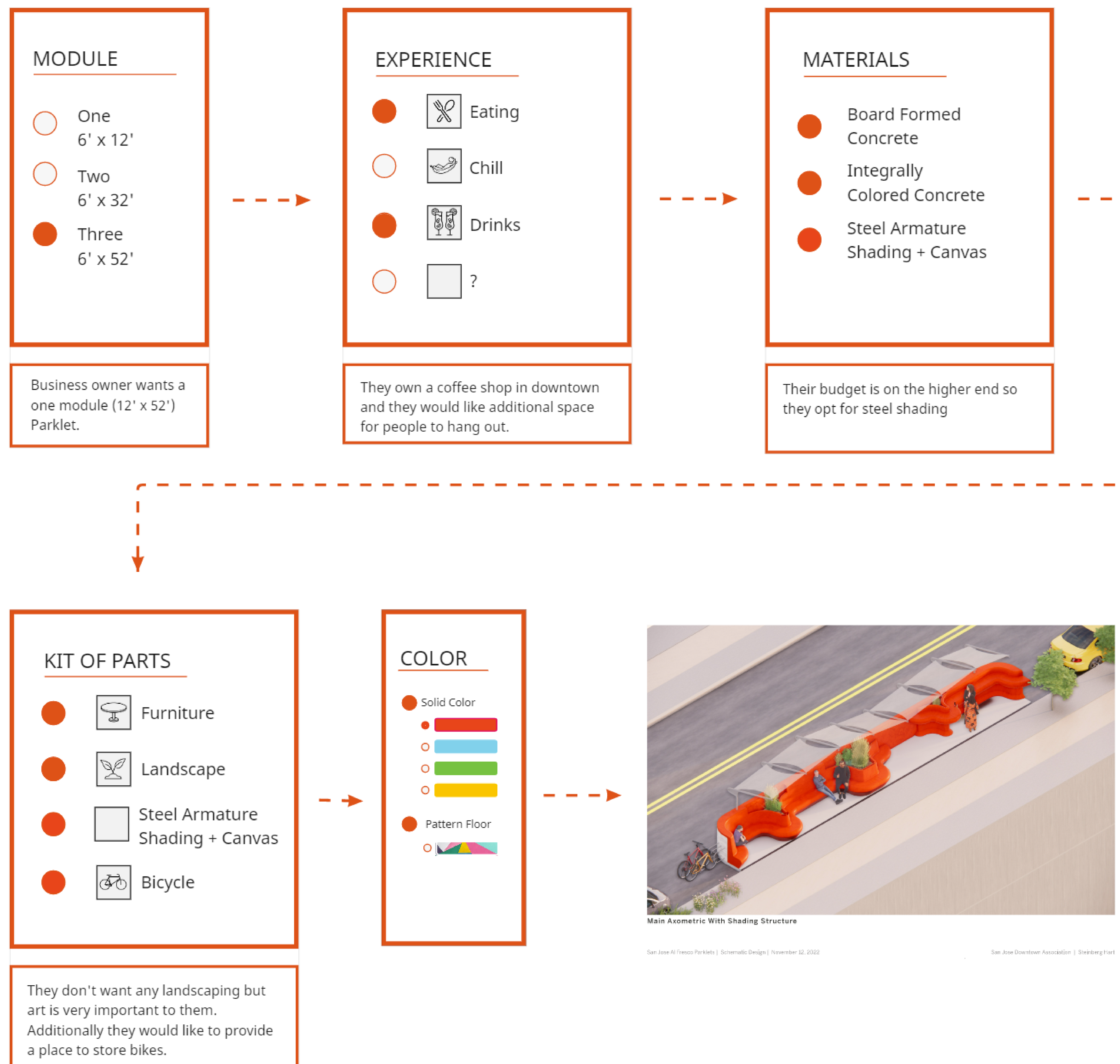
## Elevation From Street





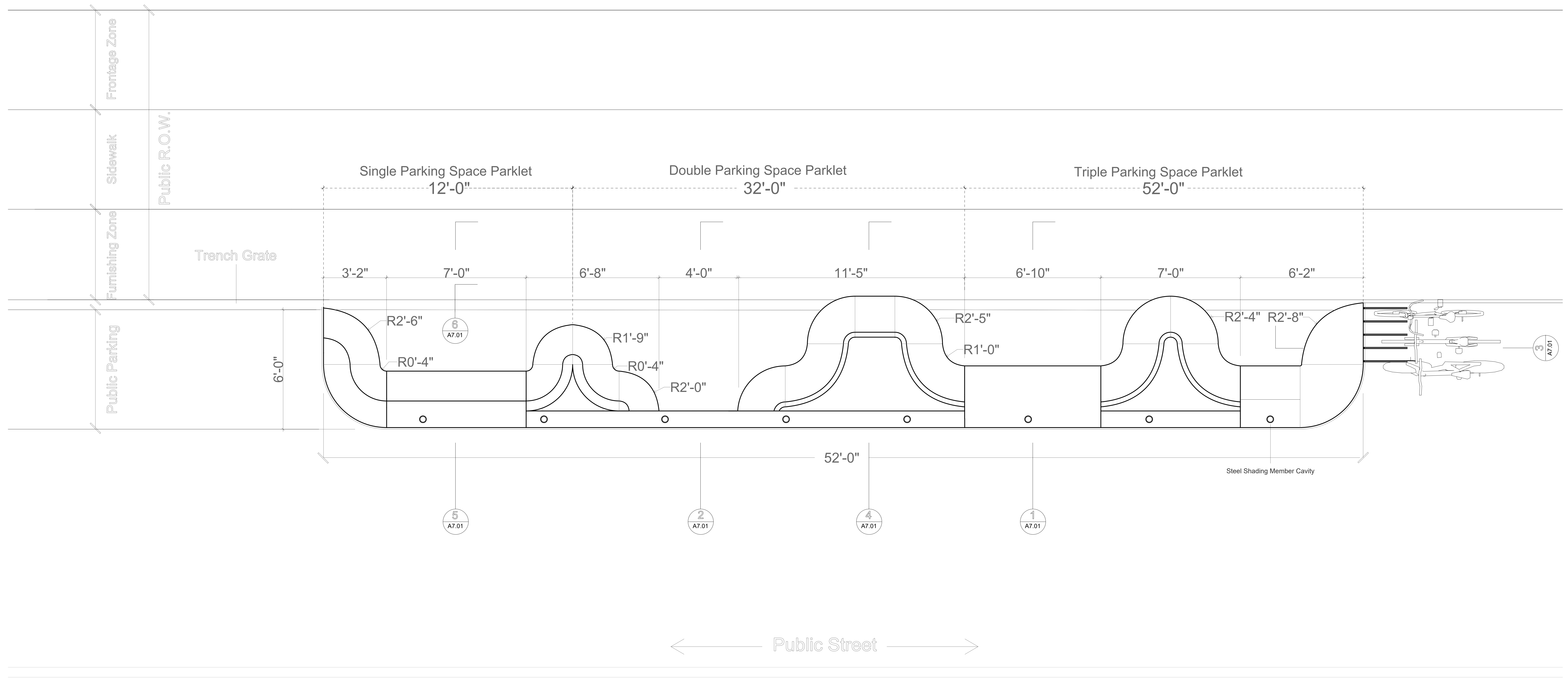
## Color Coded Modules





## Parklet Customization Menu



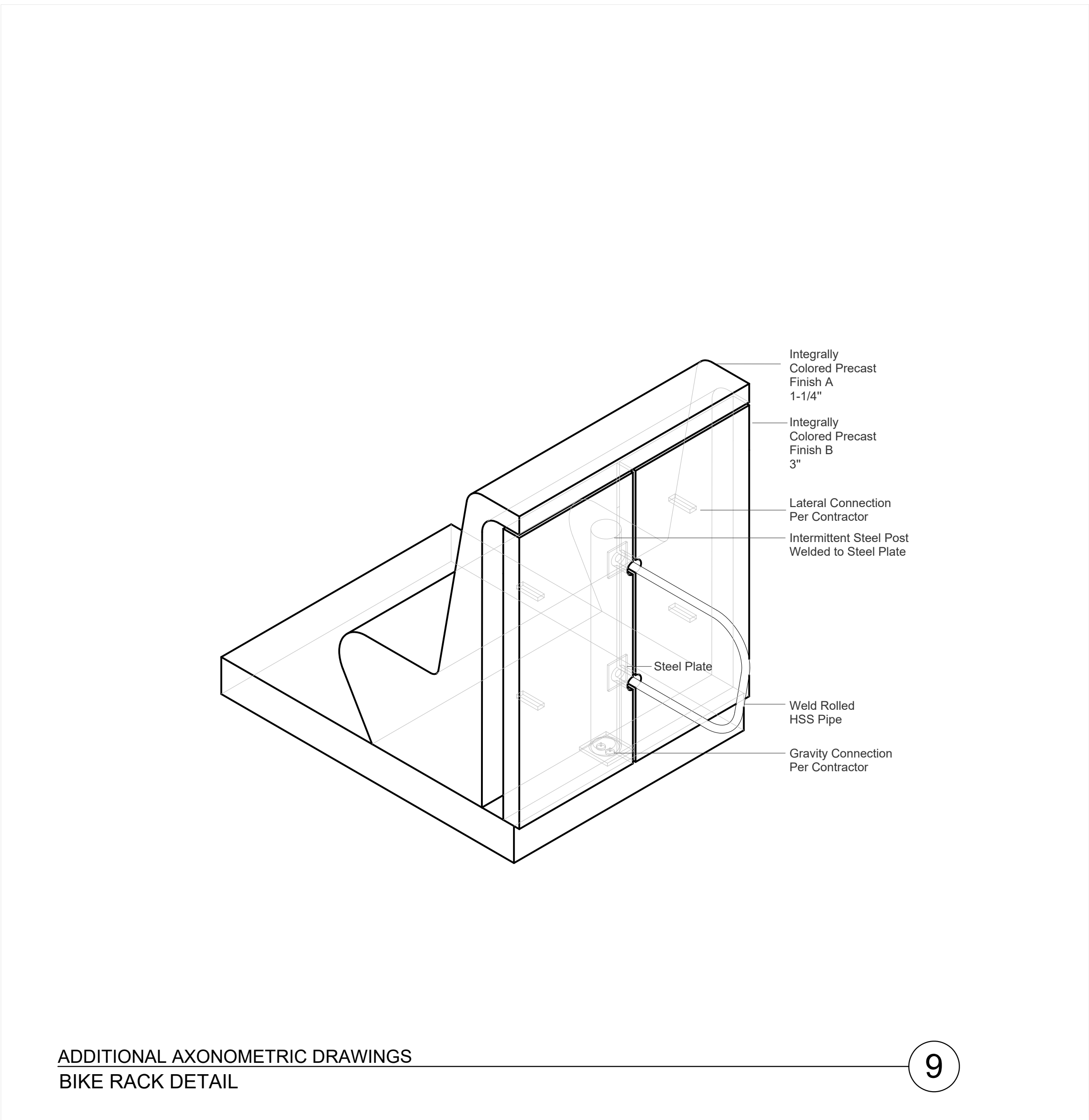
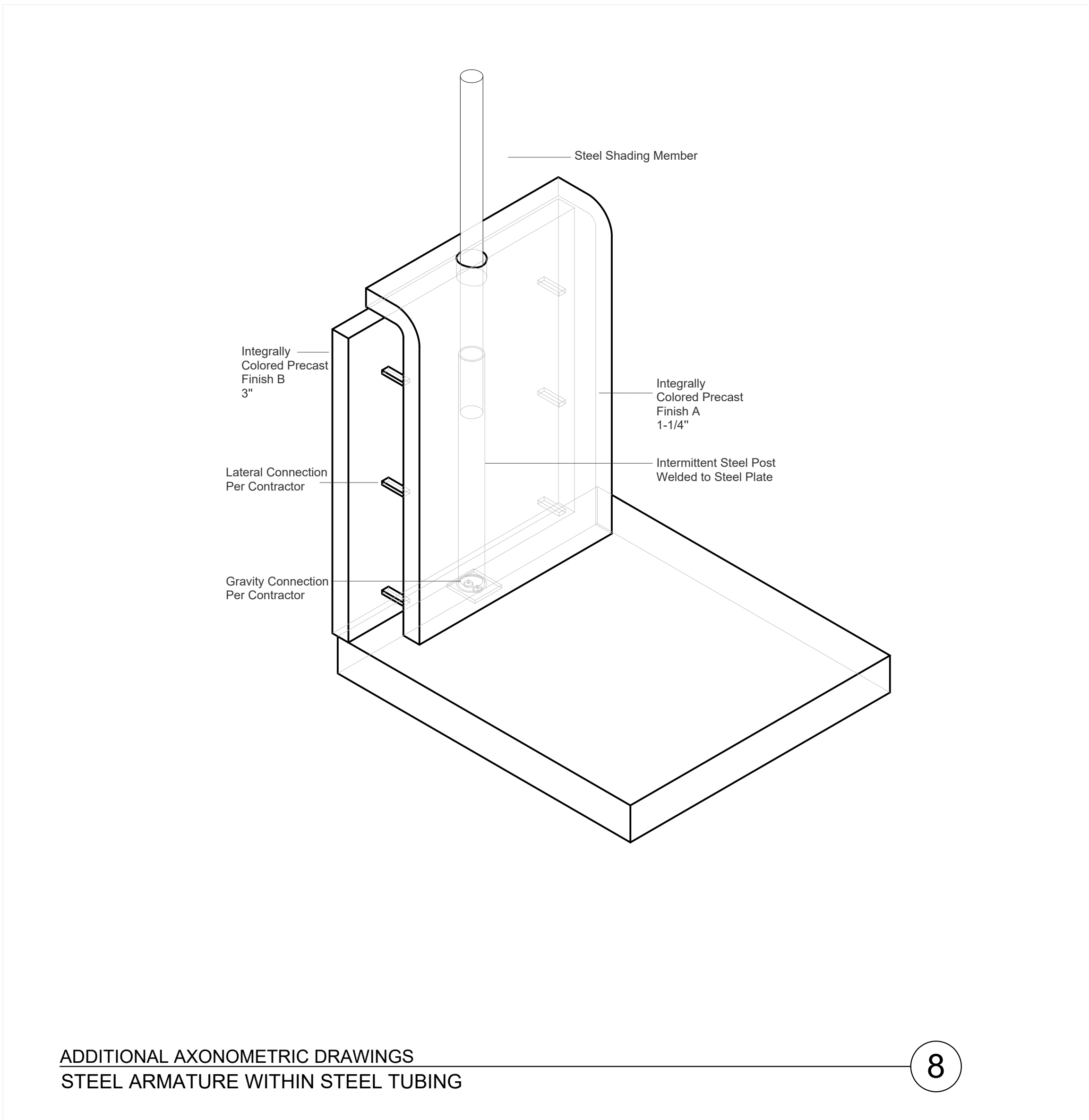
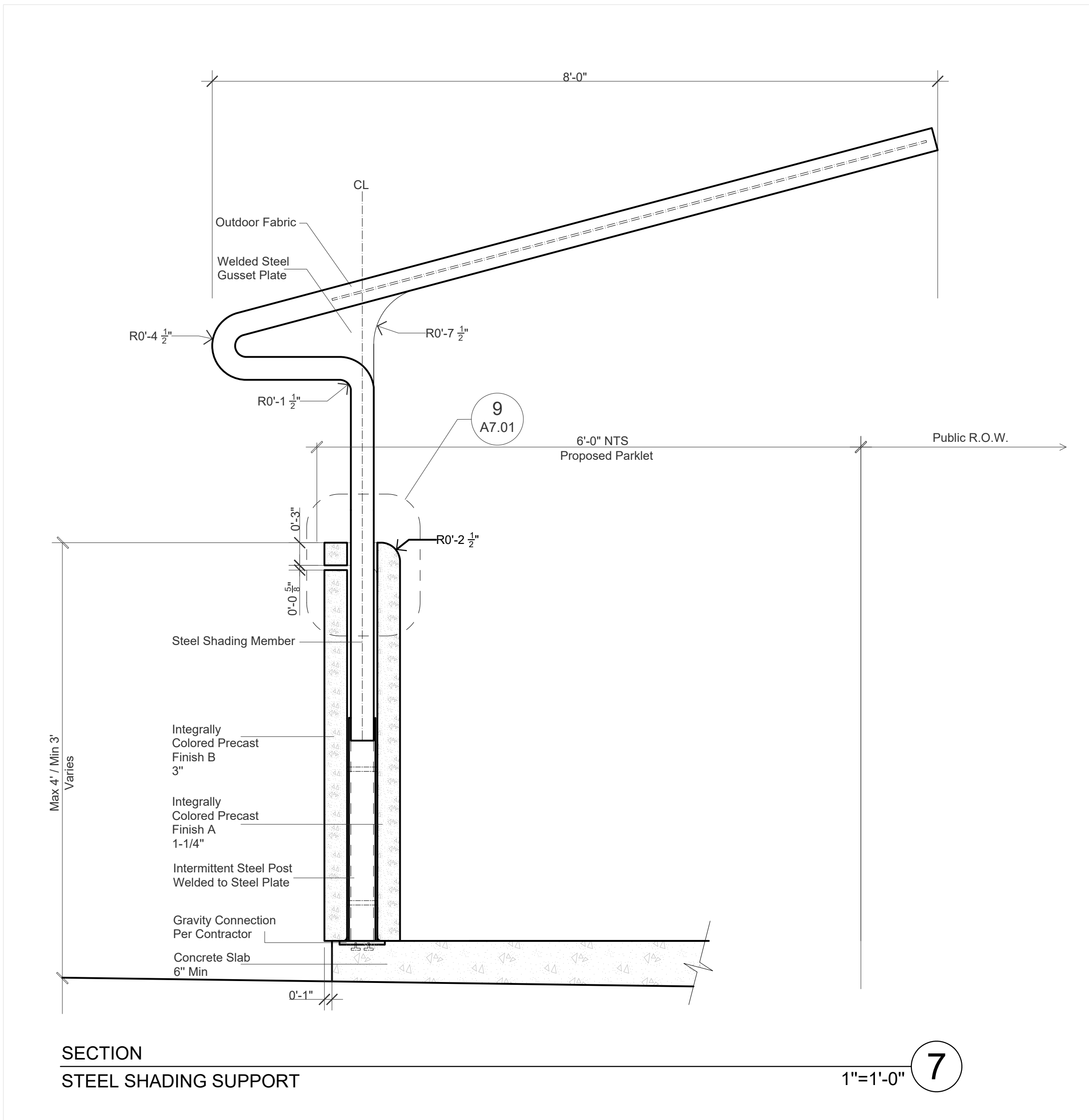
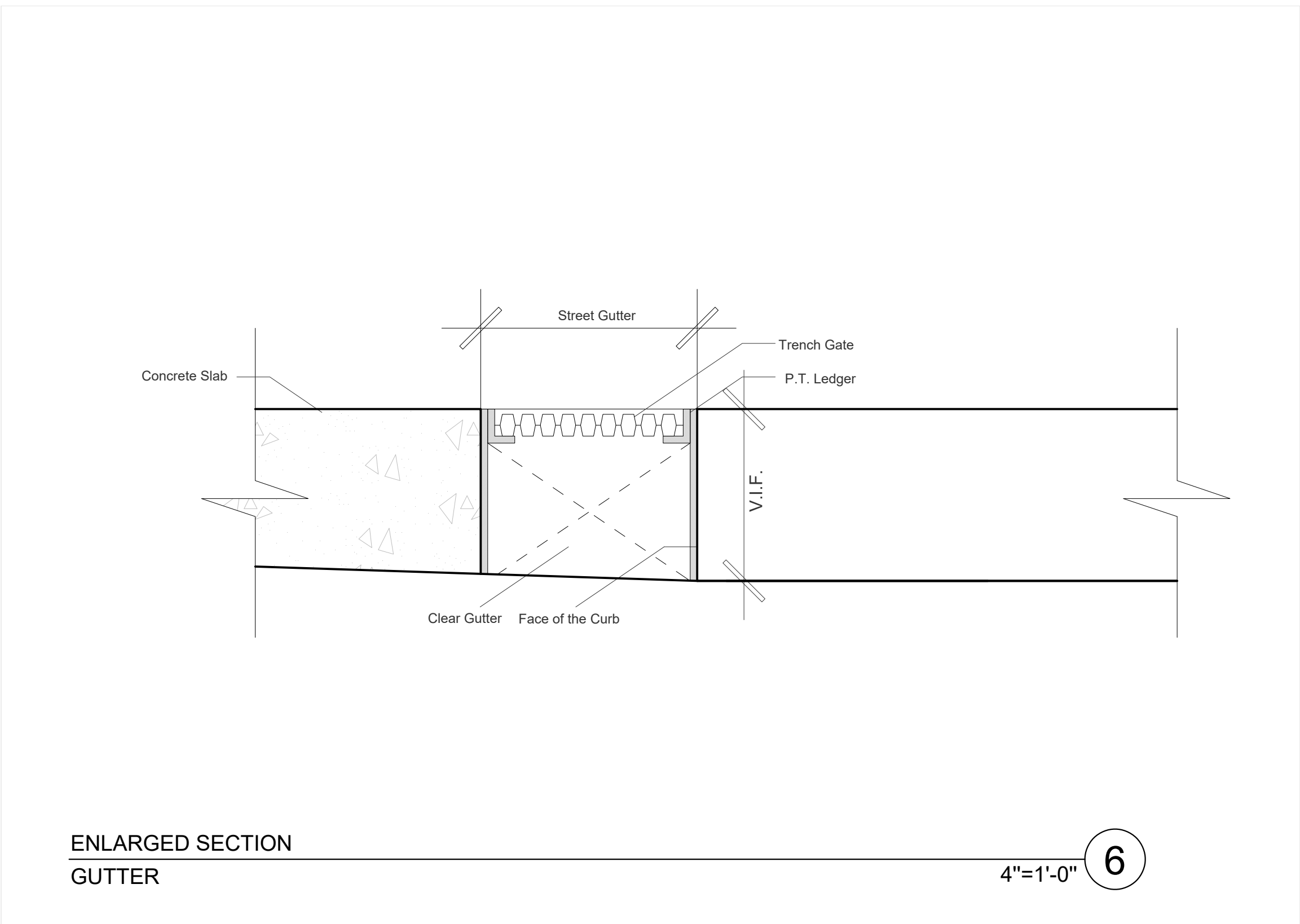
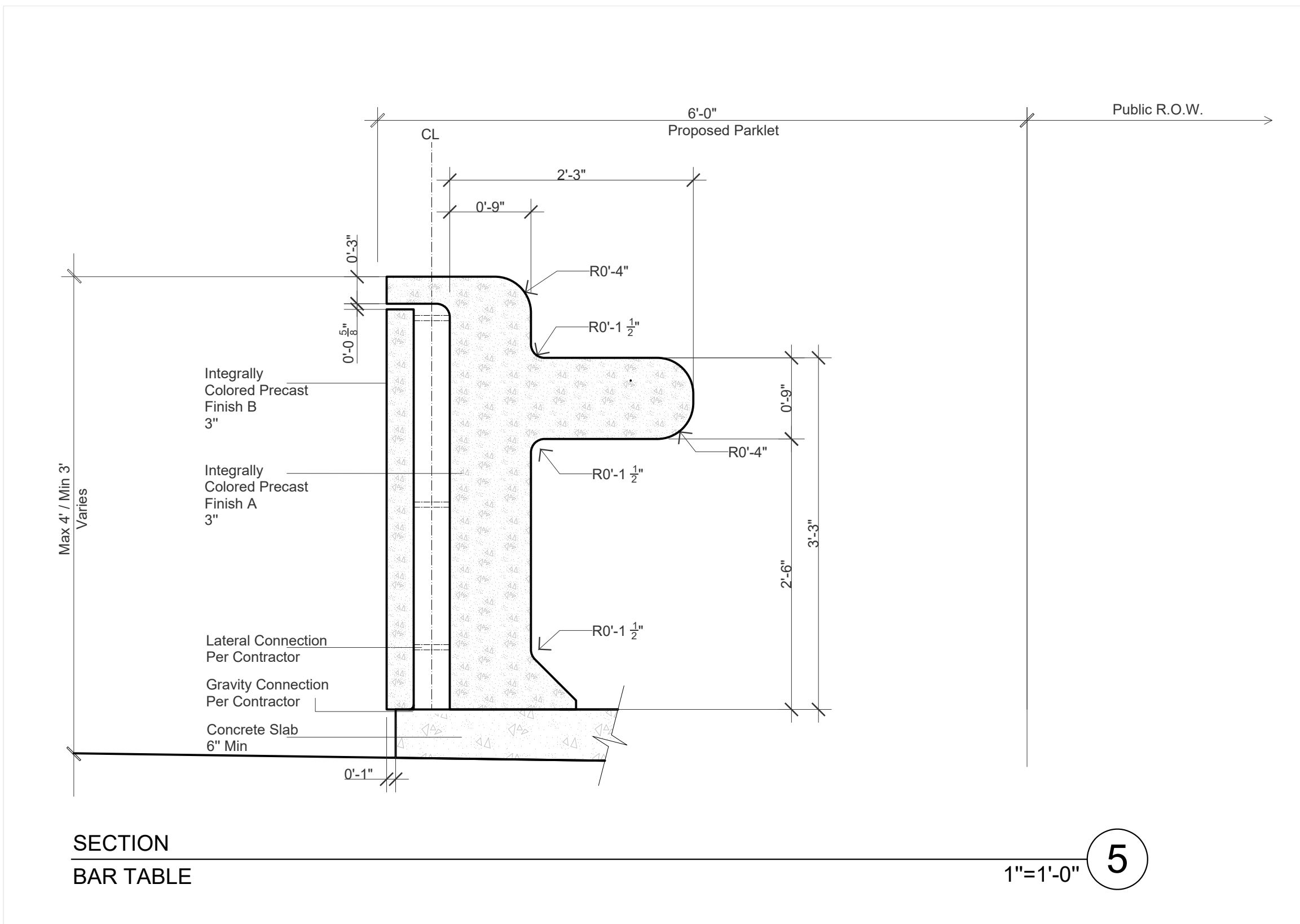
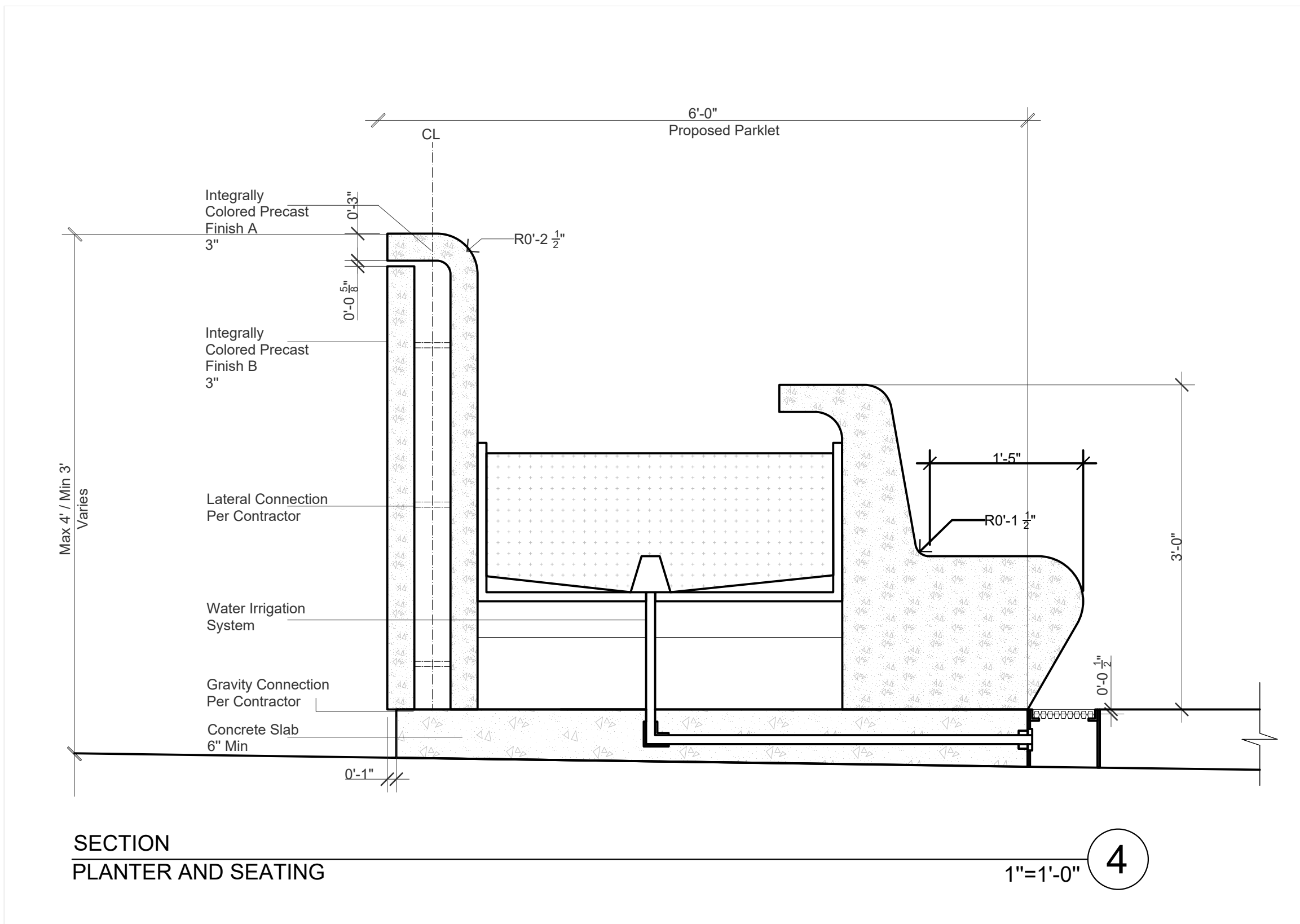
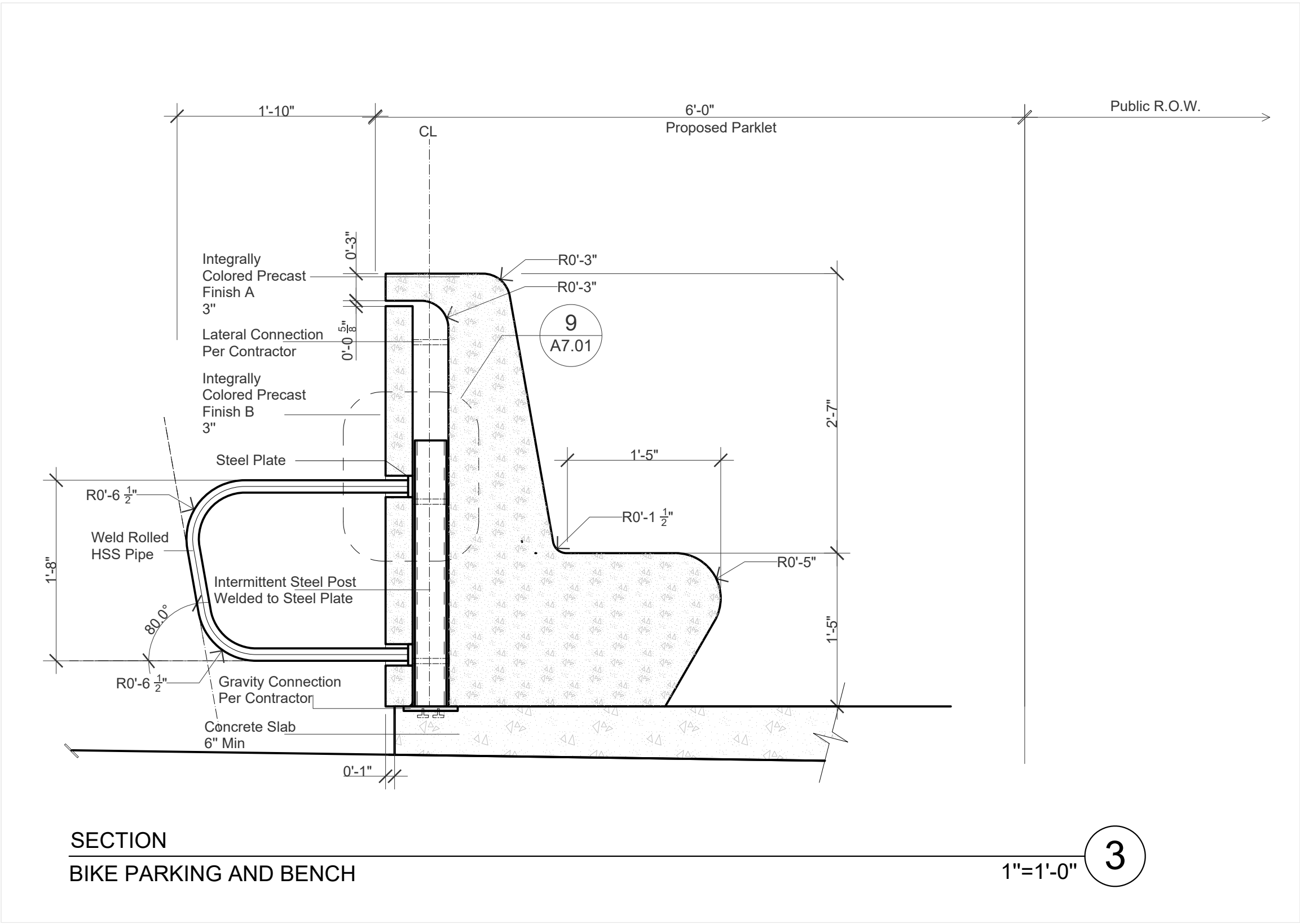
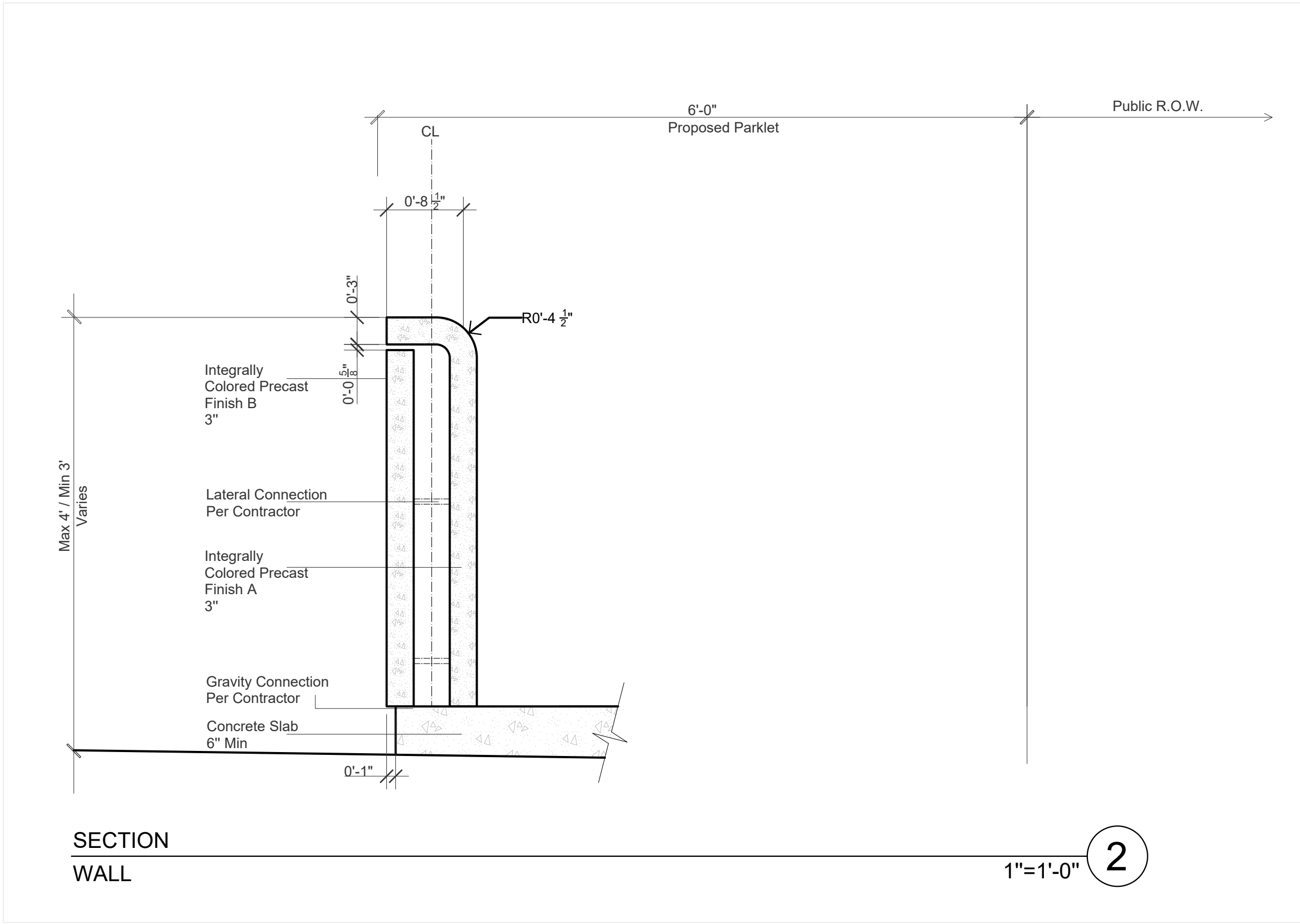
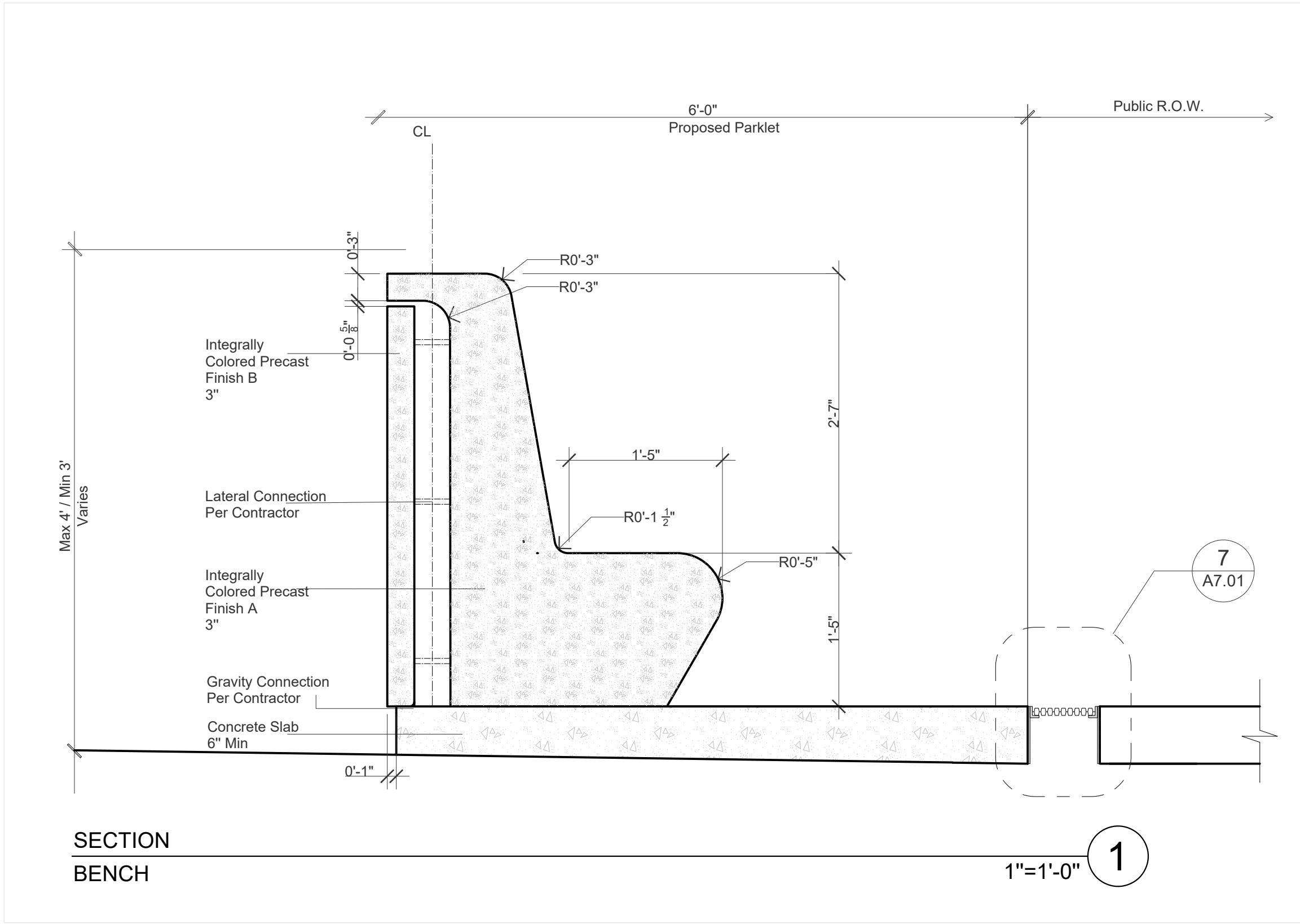


PLAN

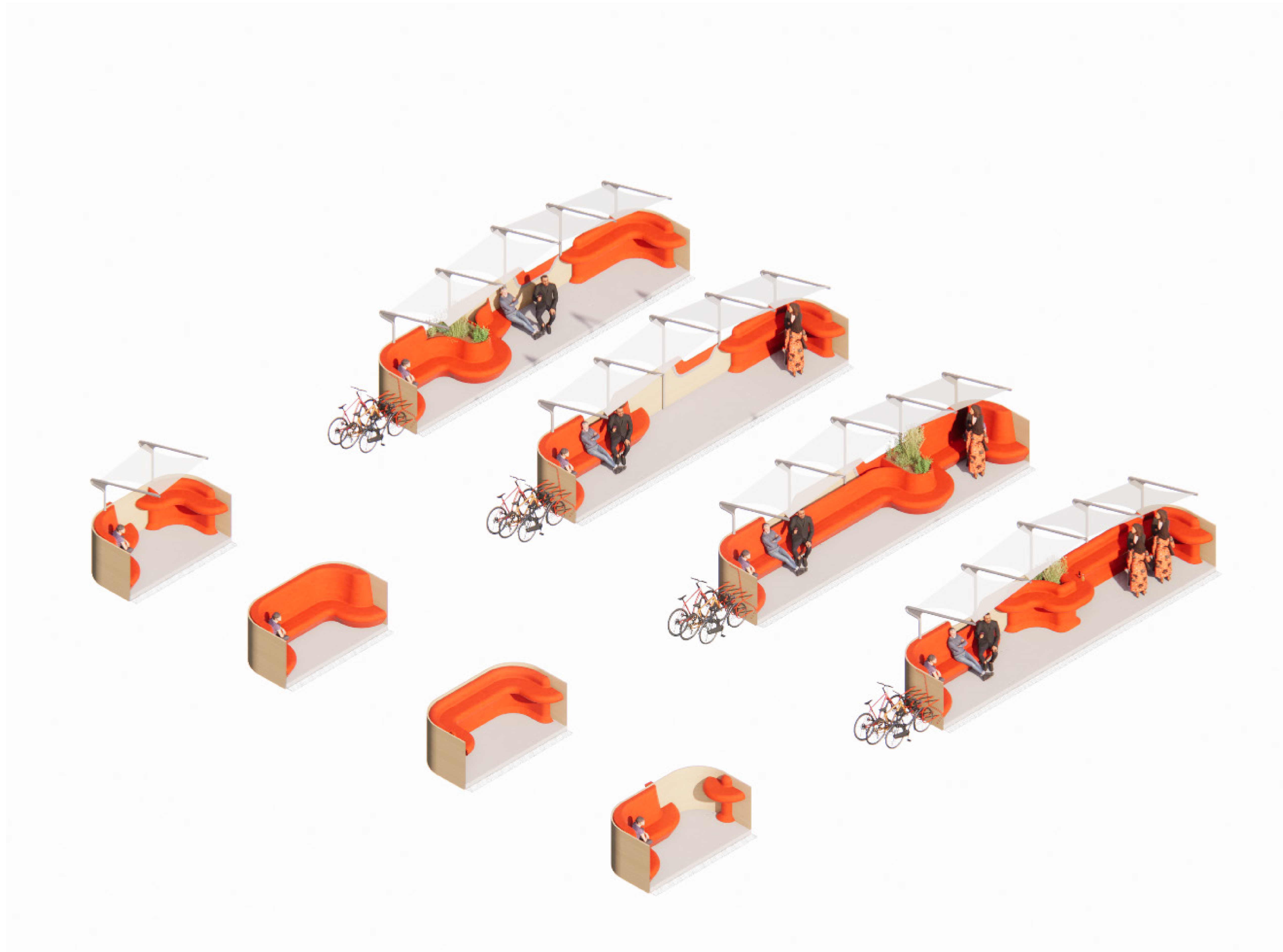
1/2"=1'-0"

10









**Customizable Parklet Ingredients**



**Inner Colorful liner with Natural Muted Exterior**

## APPENDIX